

Introducing Furness Locality Plan

Westmorland and Furness Council has three Locality Boards: Eden, Furness and South Lakeland.

Each Locality Board promotes close working with our communities, making sure local voices are heard when we are developing our services and policies. In addition, they work with residents and community groups on issues that are important to their area.

The three Locality Boards are based on the geographical boundaries of the former District Councils and are made up of the Councillors who have been elected in each particular area. Locality Boards have some decision-making powers and budgets, as well as the ability to influence and engage with matters which affect their locality.

Locality Boards have a range of responsibilities which are delivered under the below themes:

- Undertake a community leadership role, bringing together different interest groups from the public, private and voluntary sectors to work in partnership.
- Understand and influence the delivery of Council services to ensure this reflects local need.
- Allocation of funding and grants to support locality working, projects and activities.
- Support the local delivery of the Council Highways Service

Each Locality Board's Locality Plan sets out its priorities based on local issues and opportunities while supporting Westmorland and Furness Council's vision, priorities and values.



The Locality Board Plan priorities will be reviewed annually to ensure they reflect community need.

Foreword

Welcome to the first Westmorland and Furness Council Locality Board Plan for Furness. These are exciting times with new opportunities for our economy and communities.

There is a strong sense of vision and ambition to deliver services in partnership that meet community needs and ensure that the Furness area is a great place to live, work and thrive.

The creation of Westmorland and Furness Council gives us a wonderful opportunity to work in different ways to engage partners.

Our priorities are outlined on page three and we look forward to working with you all.

Cllr Tony Callister



About Furness....

- Furness covers the old Barrow Borough with four town and parish councils – Barrow, Dalton with Newton, Askam and Ireleth, Lindal and Marton.
- Population of Furness 67,409 (2021), 33,997 females, 33,432 males.
- Furness has a strong sense of community connection with people coming together to look out for each other with strong third sector partnership working to meet community need.
- Furness has a wealth of natural environment assets such as Walney Island with stunning views across Morecambe Bay to heritage assets of Furness Abbey and Dalton Castle.

Opportunities....

- Barrow has secured £25 million from the government's Towns Fund. #BrilliantBarrow includes a series of innovative projects including a university campus, a network of community hubs including Earnse Bay, a housing renewal programme and a new cycling and walking infrastructure.
- Dalton has developed its own Place Plan as part of the Borderlands ten year programme. This will help boost economic activity and bring direct investment into Dalton.
- BAE is the largest employer with a continuous workload until 2050 and beyond. It is expected to grow its workforce by more than 50%.

The challenges we face....

- Barrow experiences high rates of unemployment linked to poor health and its poorer health overall means there is a risk of people falling out of the workforce due to health conditions.
- Life expectancy varies by 12 years for men and 8 years for women between the best and worst performing wards in Furness.
- There are high rates of obesity, alcohol related issues, self-harm, suicide rates (above the national average especially for men).
- Quality in the private-rented sector housing can be poor, with poor quality a significant contributor to health inequalities, worklessness and anti-social behaviour.
- 29.3 % of people live in wards classed as the 20% most disadvantaged in England. 14.2% of households live in fuel poverty.
- Loneliness is a growing problem, particularly for older people and younger people living alone and Furness has relatively high proportions of both.
- Educational attainment in the early years is close to the national averages. By the time young people take their GCSEs Furness has fallen behind.
- Furness has the highest number of young adults not in employment, education and training in the Westmorland and Furness area.
- Furness needs to be ready to support the creation of additional jobs at BAE.

Furness Locality Board Priorities

In order to agree our priorities, Furness Locality Board Members had a number of sessions looking at local issues and considered trends, challenges and opportunities faced by our communities.

Priorities:

Health & Wellbeing – supporting everyone to start well, live well and age well.

Poverty Proofing – supporting our disadvantaged communities to access and increase opportunities.

Theme 1. Community – Empowering Furness to be the best place to live, work and thrive.

Theme 2. Education, Skills & Economy – Enabling current and future generations to reach their full potential.

Theme 3. Infrastructure, Environment & Connectivity – Connecting people and place and caring for our environment.

Theme 4. Priority wards – Support people in need and seek to reduce inequalities in Old Barrow and Hindpool wards.

Delivery

We will work with our residents and partners to ensure our priorities meet community need.

We will work with our residents and partners and use our budget to support these priorities.

Four thematic working groups have been set up to develop action plans with clear targets to support delivery.

We will strengthen partnership working with our third sector and business partners, town and parish councils to deliver services and projects to meet community needs.

We will influence policy development in Westmorland and Furness to ensure it meets our community needs.

We will build on the £1m of Know your Neighbourhood funding for Barrow to tackle social isolation.

Develop a long-term strategic plan to tackle health inequalities in our most deprived (priority) wards working with our health, third-sector partners and communities.

Develop a successful programme of sustainable travel, transport and highways schemes that contribute to our cycling and walking initiatives.

Westmorland and Furness Council Plan Delivery Framework

The Framework provides information about what the Council plans to deliver and how it will work with communities and partners to ensure Westmorland and Furness is a great place to live, work and thrive.

The Framework has identified ten strategic delivery themes, bringing these together with the Council's vision and the six strategic priorities, with three sustainability principles of equity, economy and environment.

Westmorland and Furness Target Operating Model

An operating model helps us plan and deliver activities, projects and programmes that will support the priorities we have as a Council.

The Westmorland and Furness target operating model has been designed with a focus on early intervention and improving the customer experience.

What Success Looks Like

Actions and resources are targeted at those most in need.

The voice of our community and partners meaningfully impacts on the decisions of the Furness Locality Board.

The voice of Furness residents and communities is heard and acted upon in the wider Westmorland and Furness Council.

Our third sector is more secure through medium and long-term funding.

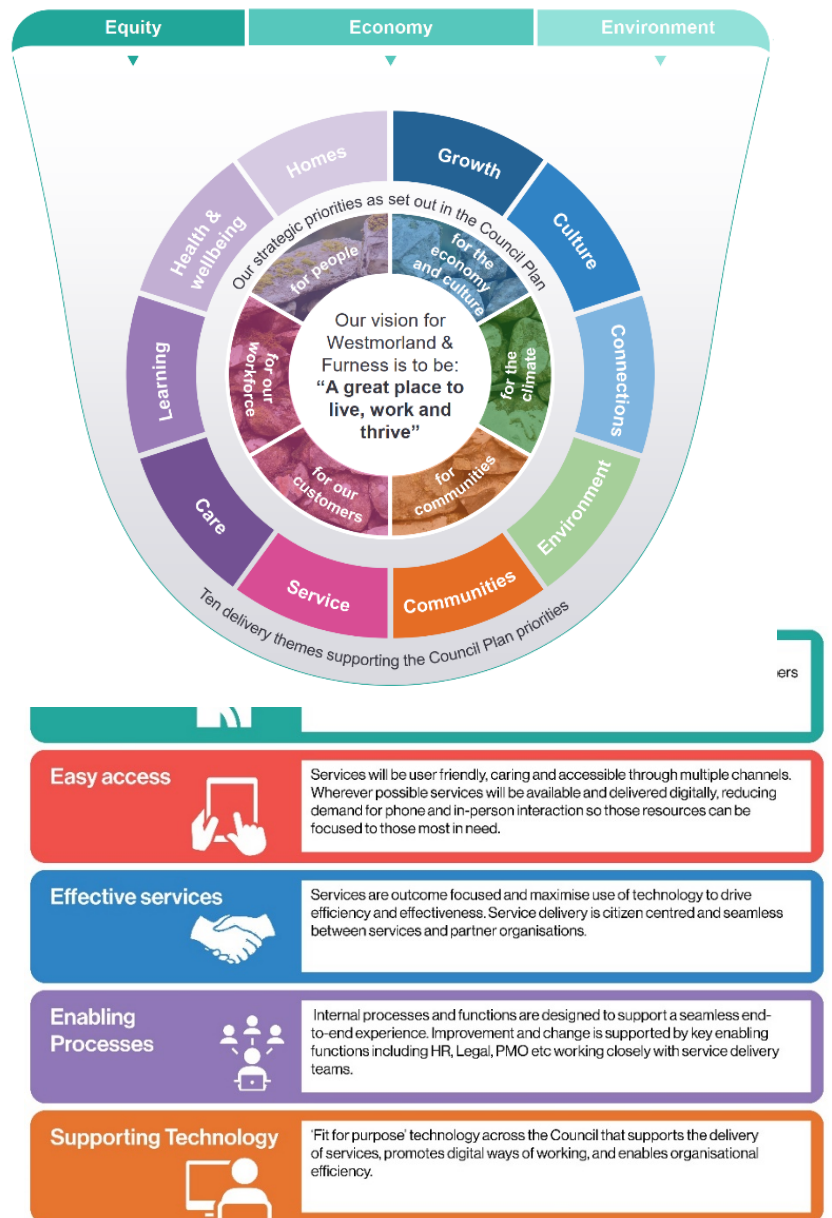
Partnership working with town and parish councils achieves positive change.

People say they feel less isolated and more connected.

Improved mental health, confidence, well-being, skills, and raised aspirations.

Those in more disadvantaged areas say they feel healthier and spend more time in good health over the course of their lives.

Reduction in pollution due to car use and a decrease in road congestion.



The above will form the basis of our Locality Board Plan which will be reviewed annually and our Locality Board Budget will support in delivering the plan.